



MACHINES & SPARE PARTS

AUTOMATION- & CONTROL TECHNIQUE

CNC CONTRACT MANUFACTURING

FINANCING, TRUST & REAL ESTATE

SIGEMA GROUP

SIGEMA GROUP. TOGETHER STRONG.

SIGEMA GROUP

Togehter strong.

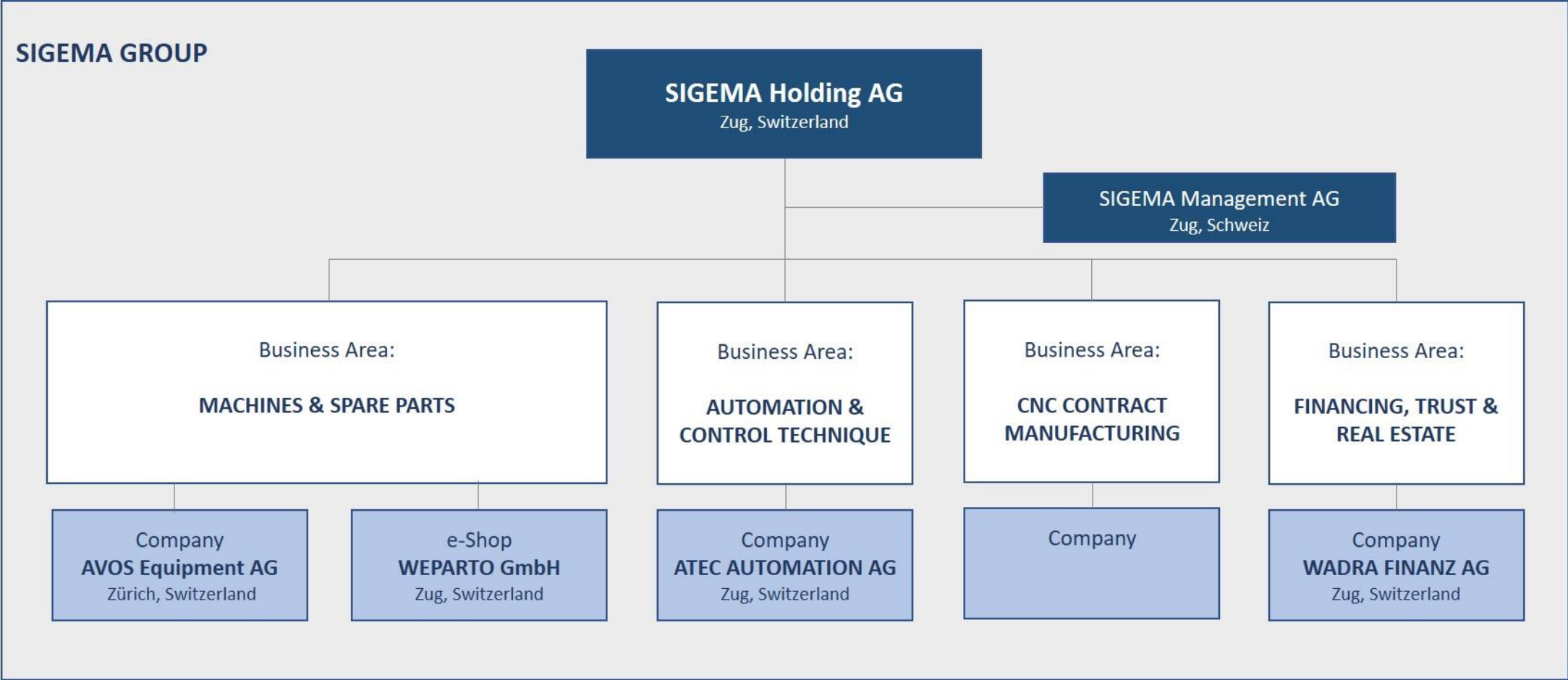
The focus of the services lies in the overhauling of second hand wire machines and distribution of spare parts, industrial production in the fields of automation and control technique, CNC contract manufacturing, as well as financing, trust and real estate.

The group currently consists of seven companies spread over two countries.

TOGETHER STRONG

SIGEMA GROUP

Gemeinsam stark



SIGEMA Holding AG

Die treibende Kraft der SIGEMA GROUP

The internationally operating holding company combines the strengths of medium-sized production, service and sales companies into a diversified group of companies, the SIGEMA GROUP.

Our investments have growth potential, they are economically successful and future-oriented. SIGEMA Holding AG is not listed on the stock exchange. The shareholders themselves are actively involved in the group and pursue a strategy directed towards long-term profitable growth.

Possible future investments in additional companies serve to complete the portfolio in the defined core industries.

5

Business Areas

7

Companies

2

Countries

4

Locations

The image shows a close-up of industrial machinery. In the foreground, there are several bright yellow rectangular components, possibly guides or supports, mounted on a white metal frame. The machinery includes various metal rods, bolts, and a complex assembly of parts. A semi-transparent white rectangular box is overlaid on the right side of the image, containing the text "Business Area" and "MACHINES & SPARE PARTS".

Business Area
MACHINES & SPARE PARTS

Business Area

MACHINES & SPARE PARTS

AVOS Equipment AG

The focus of the services lies in the wire processing industry.

The division offers used and overhauled mesh welding machines, individual system components and auxiliary machines as well as spare parts via the own e-shop.



AVOS Equipment AG

www.avos.ch | avos@sigemagroup.com

Löwenstrasse 21 | 8953 Dietikon | Switzerland

T +41 43 433 61 71 | F +41 43 433 61 70

A close-up photograph of a brown cardboard box resting on a series of parallel metal rollers, likely part of a conveyor belt system in a factory or warehouse. The background is blurred, showing more of the industrial environment. A semi-transparent white rectangular box is overlaid on the right side of the image, containing text.

Business Area
MACHINES & SPARE PARTS

Business Area

MACHINES & SPARE PARTS

WEPARTO GmbH – The e-shop

WEPARTO – the B2B e-shop offers a wide range of copper electrodes, welding transformers as well as electronic and mechanical spare parts for mesh welding machines and auxiliary components for the wire processing industry.

QUALITY.QUICK.SUPPLY.

WEPARTO GmbH – The e-Shop

www.weparto.com | weparto@sigemagroup.com

Poststrasse 9 | 6300 Zug | Switzerland

T +41 41 566 54 00 | F +41 43 433 61 70



Business Area
AUTOMATION & CONTROL TECHNIQUE

Business Area

AUTOMATION & CONTROL TECHNIQUE

ATEC Automation AG

The service portfolio includes programming (PLC) of highly automated systems and isolated solutions, set up of customer-specific interfaces (HMI panels), supply of individual electrical components, as well as construction of complete control cabinets including wiring diagrams.

ATEC Automation AG

www.atecag.com | atec@sigemagroup.com

Poststrasse 9 | 6300 Zug | Switzerland

T +41 41 566 53 00 | F +41 43 433 61 70

A close-up photograph of a complex, precision-machined metal component, likely made of aluminum or steel. The part features various surfaces, including a prominent cylindrical section on the left, a central rectangular block with a circular hole, and a circular opening on the right. The lighting is bright, highlighting the metallic textures and sharp edges. A semi-transparent white rectangular box is overlaid on the right side of the image, containing the text "Business Area" and "CNC CONTRACT MANUFACTURING" in a dark blue, sans-serif font.

Business Area
CNC CONTRACT MANUFACTURING

Business Area

CNC CONTRACT MANUFACTURING

The business area CNC contract manufacturing offers complex milled parts from aluminium, stainless steel, machining steel, copper and plastic. Complex prototypes small and medium series, individual parts or complete assemblies are produced according to samples or customer drawings.



Business Area

FINANCING, TRUST & REAL ESTATE

Business Area

FINANCING, TRUST & REAL ESTATE

WADRA Finanz AG

The portfolio includes a full service in the areas of customer-specific financial solutions for the purchase and lease agreements of machinery and systems, in the field of accounting, company founding and domiciliary management as well as administration and acquisition of real estate investments.

WADRA Finanz AG

www.wadra.ch | wadra@sigemagroup.com

Poststrasse 9 | 6300 Zug | Switzerland

T +41 41 566 52 30 | F +41 43 433 61 70

SIGEMA GROUP. TOGETHER STRONG.

SIGEMA Holding AG

Grafenastrasse 5 | 6300 Zug | Switzerland

SIGEMA Management AG

www.sigema.ch | info@sigemagroup.com

Grafenastrasse 5 | 6300 Zug | Switzerland

P +41 41 566 56 00

www.sigemagroup.com